

Liquid waterproofing is particularly well suited for complex detailing due to its versatility and ability to conform to intricate shapes and surfaces. Unlike traditional waterproofing methods, which may struggle to achieve a seamless finish, liquid waterproofing can be applied with ease.

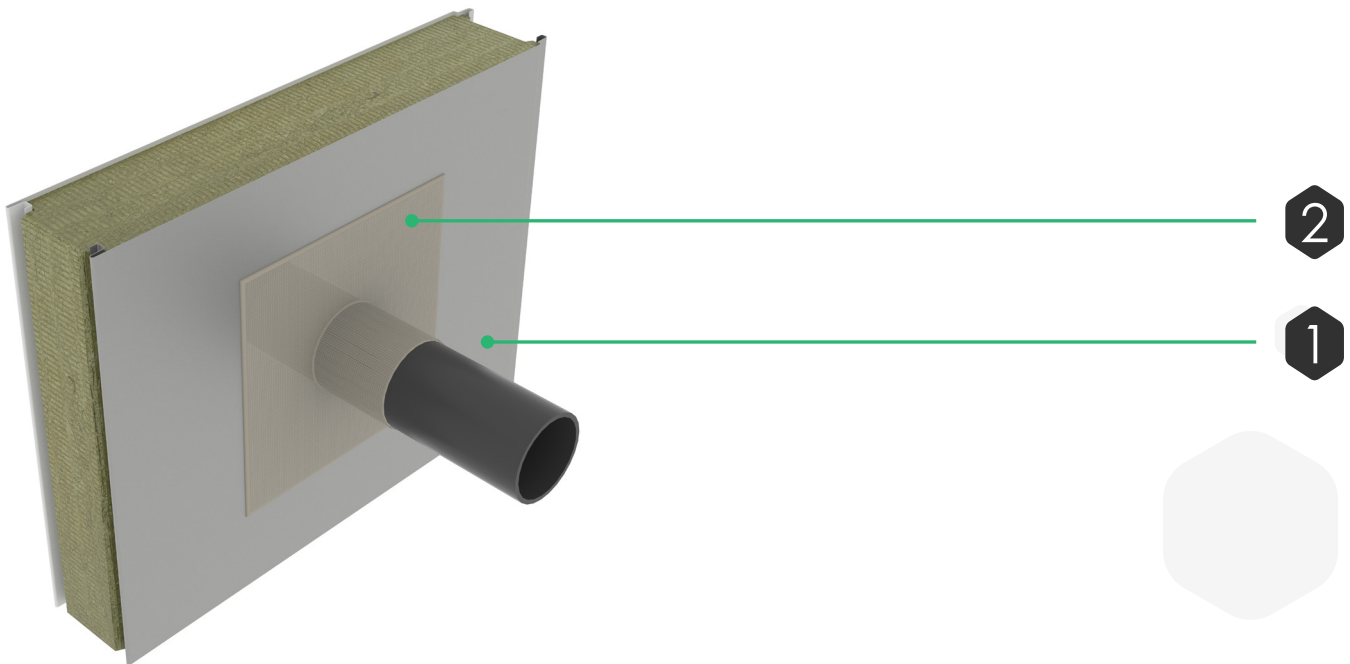
Caltech QC High Performance Waterproofing Systems comprise a rapid curing two-component, cold-applied, fully reinforced PMMA waterproofing solution which can be used independently for complex detailing. The wet-on-wet application with embedded reinforcement forms a seamless, durable membrane that is rainproof in just 30 minutes. The system is fully adaptable to meet the detailing requirements of every project, including Caltech QC FR, a grade with chopped fibre reinforcement premixed.

## ✓ Durability

When installed on stable substrates, the system will have a life in excess of 25 years.

## ✓ Where to Specify

- New Build
- Refurbishment
- Horizontal applications
- Vertical applications



Typical Assembly	
2	Caltech QC FR or Caltech QC Detail with QC RF110 Fleece embedded (refer to method statement for coverage rates)
2	Caltech QC Primer (refer to method statement for coverage rates)
1	Existing substrate

- Notes:
- For existing metal sheets a flexible acrylic based solvent free paint can be used.
  - For timber constructions a Caltech Preparation Layer should be applied prior to the application of the Caltech liquid.
  - Preparation and priming are tailored to the specific needs of the project, consult with Alumasc technical services in each case.
  - All products require catalyst.

## Warranties

Alumasc offers a comprehensive range of single-source warranty options for a period of 20 years.

## Technical Support

Alumasc Technical Services can advise on all aspects of product selection, specification and integration of Alumasc systems into any building design.