

Product Datasheet

Alumasc PVC Parapet Outlet

Sheet No: PDS-OUT002
 Issued: 02/10/2024
 Pages: 1 of 1

Description

Alumasc PVC Parapet Outlets are a PVC-U rigid outlet with factory applied Single Ply membrane flange to ensure a guaranteed seal between the outlet body and membrane flange and a compatible seal between the outlet and the Single Ply roof membrane. Supplied with Alumasc Parapet Leaf Guard and Alumasc Spigot Extension Pipe if required.

Parapet Leaf Guard

Manufactured from Polyamide the Alumasc Parapet Leaf Guard is standard fit into all the outlets in this range. The high quality mechanical action provides a reliable clamp via three padded extending legs to the inside of the outlet to ensure no damage to the inside of the pipe and for long term performance. The installation / removal of the leaf guard is a hand operation and does not require any specialist tooling.

Extension Spigot Pipes

To enable the drainage to reach the outside of the building it is sometimes required to extend the spigot using the Extension Spigot Pipe product. Manufacture from the same PVC-U as the outlet, the extension has a watertight push fit EPDM seal factory applied and is supplied with lubricant to ease fitting.

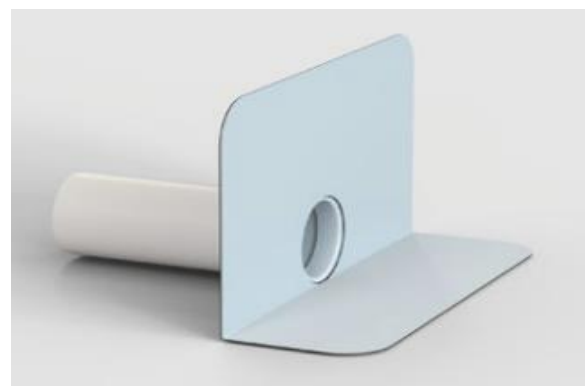
Product Data

Nominal Outlet Ø	Product Code	Spigot OD Ø	Solid Flange Size (mm)	Membrane Flange Size (mm)	Spigot Pipe Length (mm)
50mm	PVC-PO-50	50mm	47 x 103	122 x 178	300mm
100mm	PVC-PO-100	75mm	57 x 173	192 x 308	300mm
150mm	PVC-PO-150	90mm	47 x 213	167 x 333	300mm

Extension Spigot Pipes with push fit connections are available to suit all pipe diameters. Standard extension pipes are 300mm long, alternative lengths are special order.

Nominal Outlet Ø	Drainage Rate Ltr/Sec	Tested Head of Water
50mm	0.37	35mm
70mm	0.55	35mm
80mm	0.74	35mm

Drainage rates shown are from testing with Standard Leaf Guard Installed.



Outlet pictured above is shown without Leaf Guard



Certification

All Flow Rates of the vertical outlets incl. Leaf Guard exceed the minimum requirements of DIN 1986-100 (flow rate standard) The outlets including leaf guard are tested following DIN EN 1253.

Health & Safety

Safety Data Sheets are available upon request and can also be downloaded directly from www.alumascroofing.com.

Technical Support

Technical advice is available from Alumasc Technical Services at:

Telephone: +44 (0)1744 648400

Email: technical@alumascroofing.com

The company pursues a policy of constant product development and information contained in this publication is therefore subject to change without notice. The customer is responsible for ensuring that each product is fit for its intended purpose and that the conditions for use are suitable. All quoted data is nominal and subject to production tolerances.

Our company policy is one of continuous research and development; we therefore reserve the right to amend content herein without prior notice.